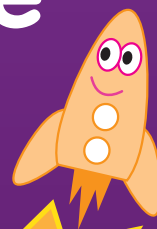


# The Extended Free Childcare Offer

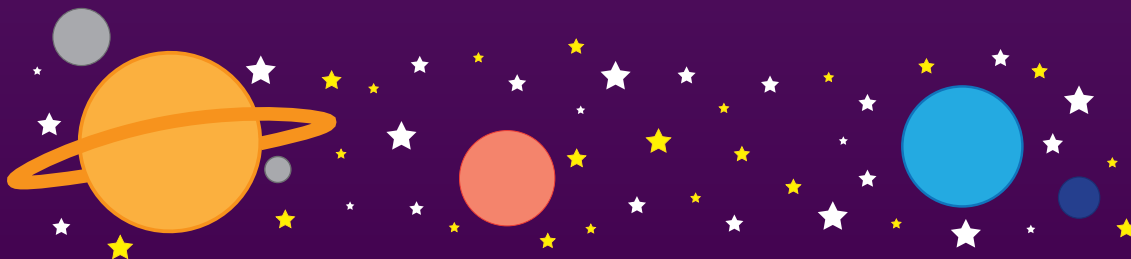


**Additional hours of free childcare will  
be available for working families from  
September 2017**

## Information for parents

The Government is increasing the free childcare offer for eligible three and four year olds from 570 hours a year up to 1140 from September 2017. To qualify for the additional hours of free childcare, each parent (or the sole parent in a single parent family) will need to earn, the equivalent of 16 hours on the national minimum wage per week. See the back of this leaflet for the eligibility criteria.

The intention is to help families by reducing the cost of childcare and supporting parents to work. Childcare in the early years offers a caring and happy experience that supports children's development and gets children ready to thrive at school and in later life.



# Criteria for the extended free childcare offer

The additional hours will be available to families where;

Both parents are working (or the sole parent is working in a lone parent family) and each parent earns a weekly minimum equivalent to 16 hours at national minimum wage, and less than £100,000 per year. Working will include employed and self-employed persons. Parents do not necessarily need to actually work 16 hours a week, but their earnings must reflect at least 16 hours of work at national minimum wage or national living wage. This includes parents on zero hour contracts who meet the criteria.

Both parents are employed but one or both parents is temporarily away from the workplace on parental, maternity, paternity leave or adoption leave.

Both parents are employed but one or both parents is temporarily away from the workplace on statutory sick pay.

One parent is employed and the other parent has substantial caring responsibilities based on specific benefits received for caring.

A family with an annual household income of £199,998 would be eligible if each parent earns just under £100,000.

You can stretch  
the free childcare offer to  
suit you

**22 hours**

*over 52 weeks a year*

**24 hours**

*over 48 weeks a year*

**30 hours**

*over 38 weeks, term time*

[www.derby.gov.uk/freechildcare](http://www.derby.gov.uk/freechildcare)

[fis@derby.gov.uk](mailto:fis@derby.gov.uk)

01332 640758